



**Modification For Autocloser
And Liftmaster 398LM Smart Control Panel
For Compatibility And Proper Operation**



Introduction:

The Autocloser is not compatible with the Liftmaster 398LM Smart Control Panel when the Autocloser is connected as described in the Autocloser Installation Manual. The standard installation is to connect the Autocloser N.O. terminals to the same two terminals on the garage door operator that the garage door operator control panel/button is connected to. This puts the Autocloser control in parallel with the control panel/button. In the case of the Liftmaster 398LM Smart Control Panel, however, this connection approach is not compatible. The Autocloser will close the door as expected but each time the Autocloser closes the door, the clock on the control panel is reset. The 398LM draws some power from the terminals on the garage door operator that it is connected to and uses a serial communication protocol to communicate button information to the garage door operator. When the Autocloser operates the garage door, it shorts the power to the control panel.

Solution/Workaround:

The only way to make the Autocloser compatible with the 398LM Smart Control Panel is to change the connection to the Autocloser N.O. terminals. The Autocloser N.O. terminals should not be connected to the garage door operator at all. The only wires that should be connected to the garage door operator are the two wires that go from the operator to the 398LM Smart Control Panel.

The 398LM Smart Control Panel has to be modified to add two wires as shown in the following images. The other end of the two wires added to the control panel connect to the Autocloser N.O. terminals. In this configuration, the Autocloser simulates the pressing of the control panel button at the control panel rather than at the garage door operator. The control panel then sends the button press to the garage door operator.



Figure 1 398LM Smart Control Panel Removed From Box

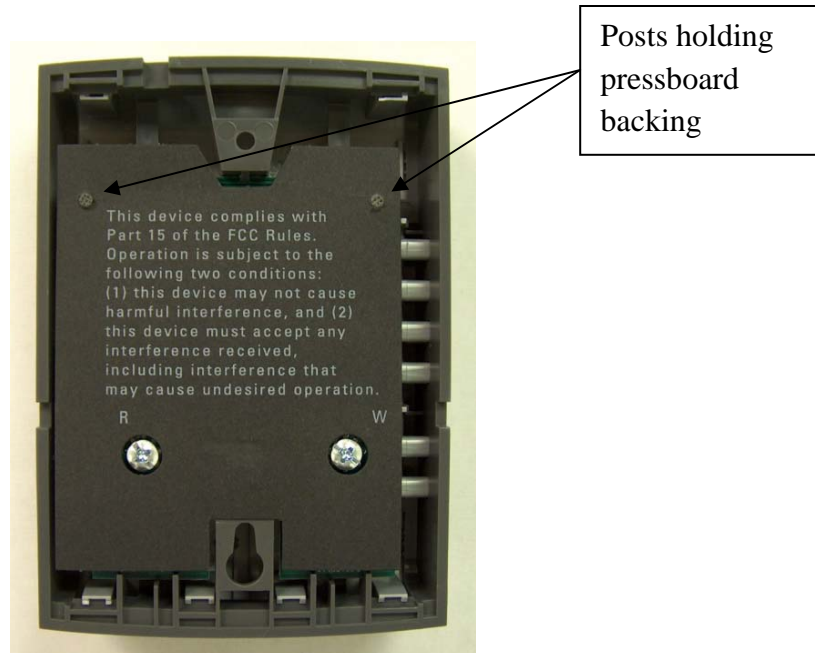


Figure 2 Back of 398LM Smart Control Panel

Remove the pressboard backing (piece with the FCC notice printed on it) from the 398LM by sliding it up and over the two posts pointed out in the above image.

Notch for routing wires

These two pins will get a wire connected to them

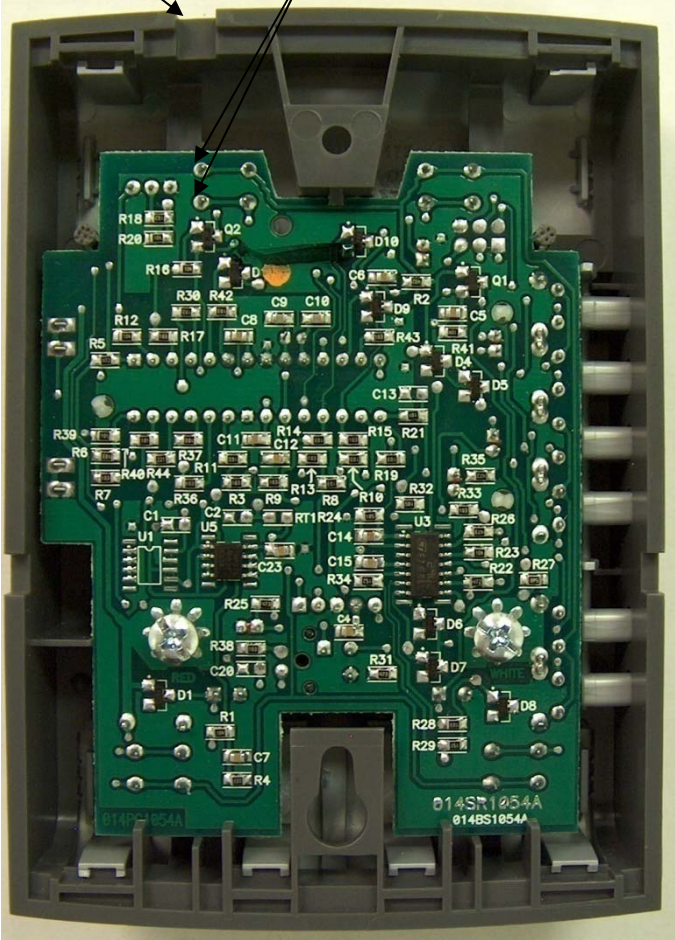


Figure 3 Back of 398LM Smart Control Panel With Pressboard Backing Removed

Removing the pressboard backing will expose the printed circuit board in the 398LM Smart Control Panel. One wire will be attached to each pin pointed out in the picture above. These two wires will be routed through the same notch in the plastic housing that the wires connected to the two screw terminals are routed through.

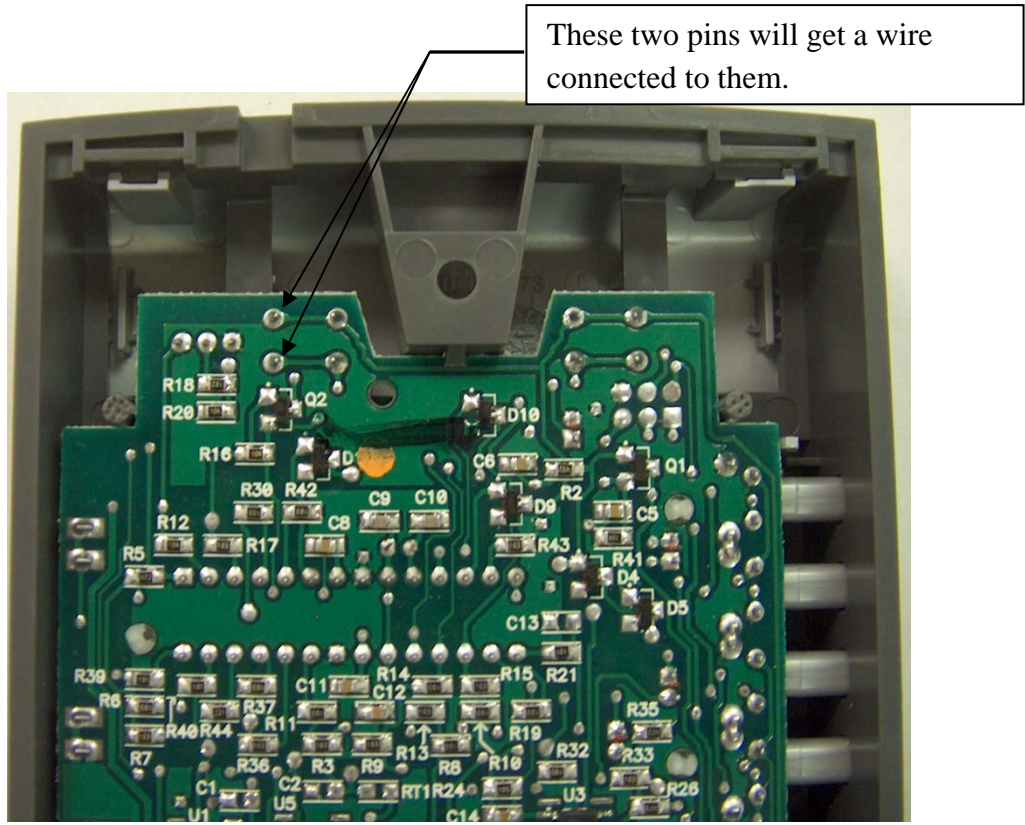


Figure 4 Close Up of Pins The Wires Will Be Connected To

The two wires need to be soldered to the two pins indicated. Clear RTV silicone adhesive should be used to hold the wires in place on the circuit board.

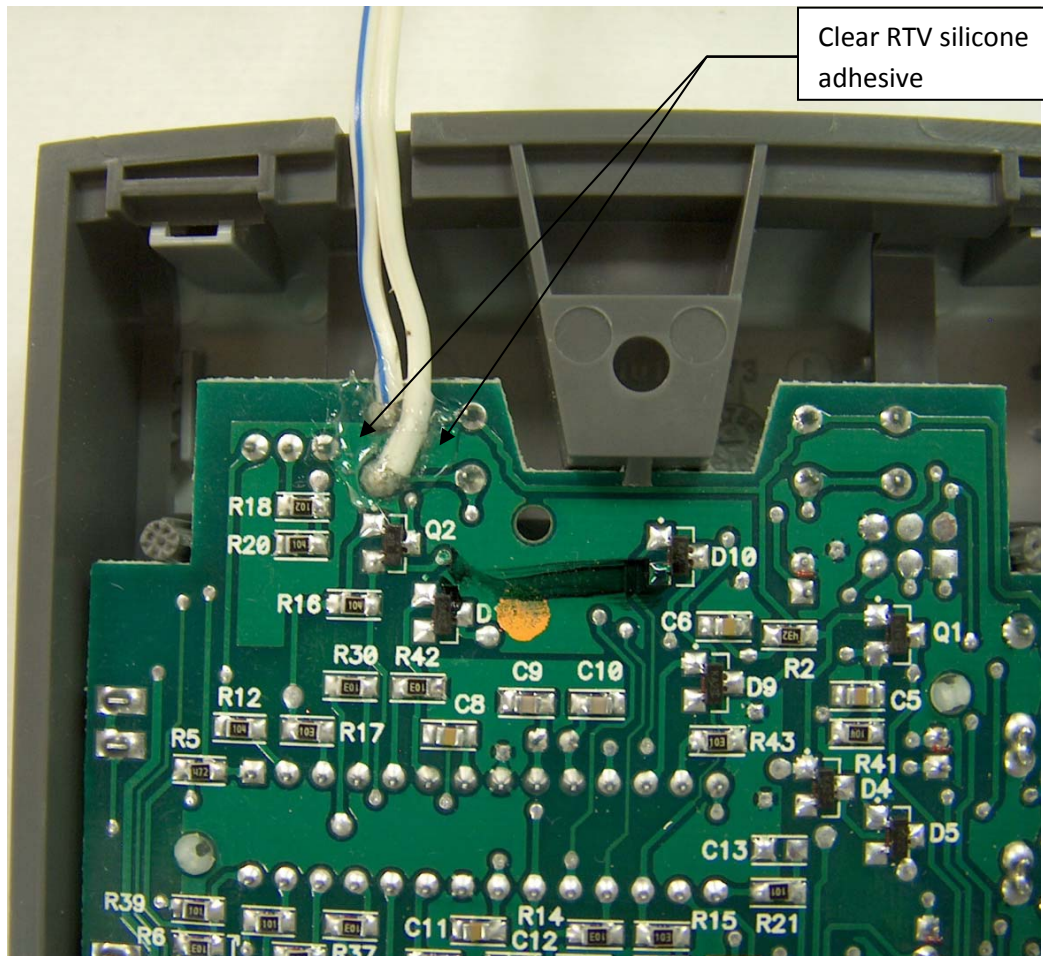


Figure 5 Back of 398LM With Wires Connected To Two Pins

Replace the pressboard backing and the 398LM Smart Control Panel is ready to install. Connect the wires to the screw terminals as described in the instruction manual for the garage door operator or the instruction manual that came with the 398LM. Mount the 398LM as described in the instruction manual. Connect the two wires that are connected to the screw terminals as

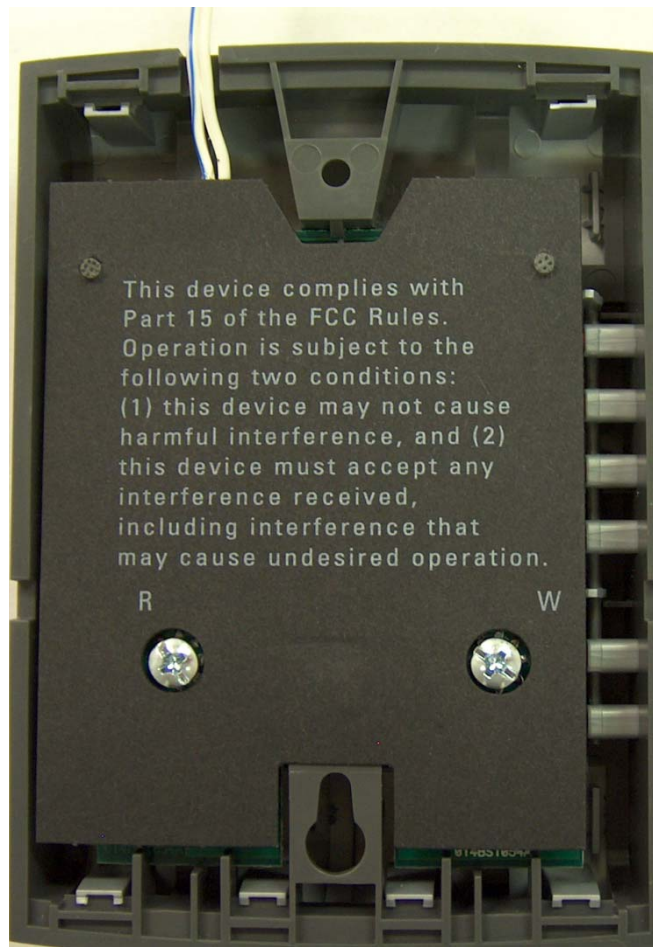


Figure 6 Back of 398LM with Added Wires and Pressboard Cover Replaced

described in the in instruction manual for the garage door operator or the instruction manual that came with the 398LM. Test the garage door operator and 398LM for proper operation. Connect the two added wires to the Autocloser N.O. terminals. It does not matter which of the two wires goes to which N.O. terminal – just connect one wire to one N.O. terminal and the other wire to the other N.O. terminal. All instructions other than the N.O. terminal connections in the Autocloser installation manual should be followed. Turn the Autocloser on and open the garage door. Wait for the Autocloser to start beeping indicating that it is about to close the door. Allow the Autocloser to close the garage door and observe the closing process. The door should partially close and then reopen all the way. After a short delay, the Autocloser will completely close the garage door.